



10 Beresford Close, Andover, SP10 2HN
Asking Price £415,000



10 Beresford Close, Andover, Asking Price £415,000

PROPERTY DESCRIPTION BY Miss Molly Scruton

This exceptional family home has been beautifully transformed to create a truly show-stopping interior, blending style, warmth, and functionality in a way that immediately feels special the moment you arrive.

The frontage offers instant kerb appeal, with generous off-road parking and a welcoming entrance that sets the tone for what lies within. Inside, the home opens into a wonderfully versatile layout designed for modern family living. The kitchen is sleek, contemporary, and effortlessly stylish, flowing seamlessly into an impressive family and dining space that forms the heart of the home — perfect for everyday life, entertaining, and making memories. From here, doors lead through to a charming snug, creating a cosy retreat ideal for relaxing evenings or quiet mornings.

A further studio or study space or bedroom 4 provides excellent flexibility, whether you're working from home, creating, or needing a playroom, while a practical utility area keeps day-to-day living neatly tucked away.

Upstairs, the home continues to impress with three beautifully presented bedrooms, each finished to an exceptional standard. The principal bedroom is a calm and elegant sanctuary, styled with incredible attention to detail and enjoying a lovely outlook. The additional bedrooms are equally striking, offering character, warmth, and versatility for family



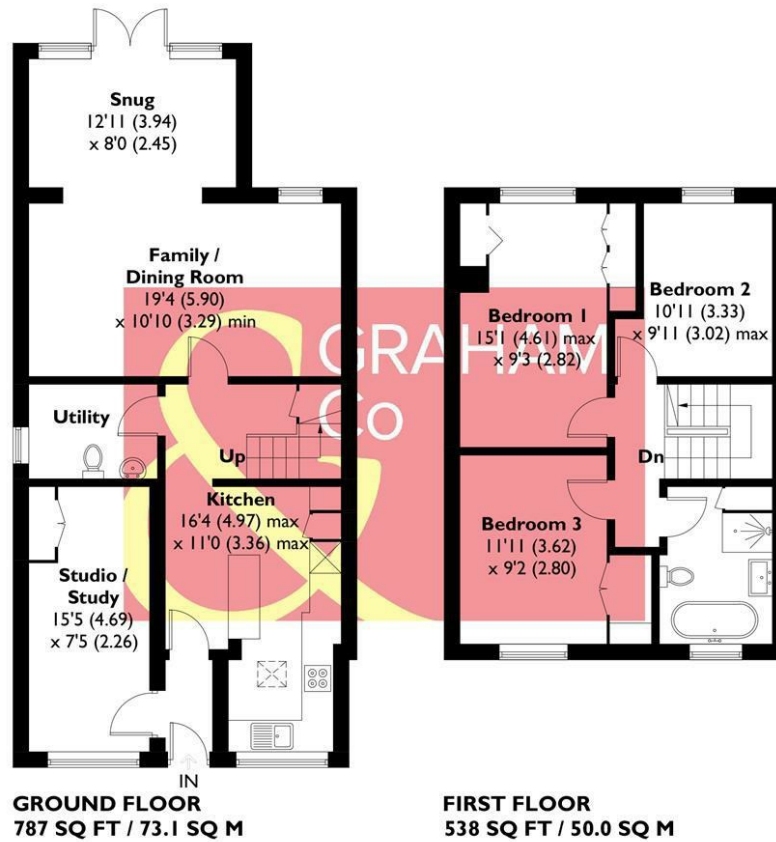


Andover offers a good range of shopping and recreational facilities including a theatre, cinema, new leisure centre, excellent selection of schools and a college for higher education. An abundance of open space and land with a selection of local nature reserve's all within walking distance of the town centre. The town itself boasts a lovely "market town" feel and everything you may need is close at hand. The mainline train station offers a fast service to London Waterloo in just over an hour, and the A303 gives access to London via the M3 and the West Country.





APPROXIMATE GROSS INTERNAL AREA = 1325 SQ FT / 123.1 SQ M



This plan is for layout guidance only. Not drawn to scale unless stated. Windows and door openings are approximate. Whilst every care is taken in the preparation of this plan, please check all dimensions, shapes and compass bearings before making any decisions reliant upon them. Created by Emzo Marketing (ID1273204)
Produced for Graham & Co

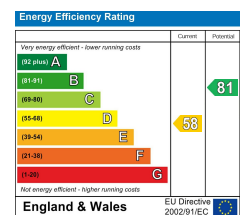
MORTGAGE ADVICE

Across The Market Mortgages

An independent Mortgage brokerage offering expert advice from across the whole market. Whether you are a first-time buyer, home mover, remortgaging or buying a Buy-To-Let investment. Tristan can provide expert & reliable advice, in a clear jargon free language. Book a free consultation today.

E - tristan@atmmortgages.com M - 07545320380

www.atmmortgages.com



Tax Band: C



OPEN 7 DAYS

If you are considering selling your home please contact us today for your free no obligation valuation

01264 356500

IMPORTANT: we would like to inform prospective purchasers that these sales particulars have been prepared as a general guide only. A detailed survey has not been carried out, nor the services, appliances and fittings tested. Room sizes should not be relied upon for furnishing purposes and are approximate. If floor plans are included, they are for guidance only and illustration purposes only and may not be to scale. If there are any important matters likely to affect your decision to buy, please contact us before viewing the property.

